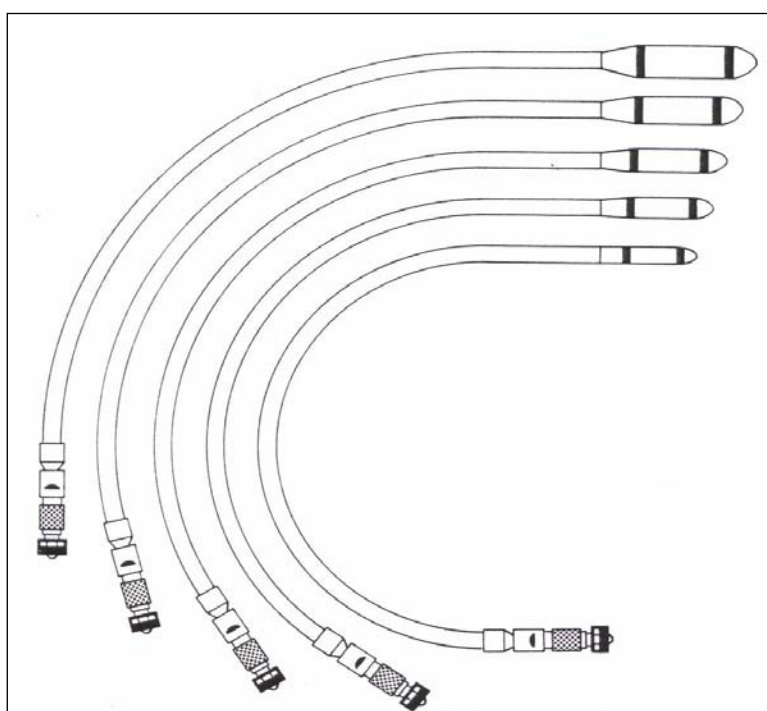


## OPERATION MANUAL AND PARTLIST

### PNEUMATIC POKERS TYPE PTL



### Lievers B.V. Holland

Postbus 103

3640 AC Mijdrecht

tel: +31 (0)297-231900

fax: +31 (0)297-231909

e-mail: [info@lieversholland.nl](mailto:info@lieversholland.nl)

[www.lieversholland.nl](http://www.lieversholland.nl)



# GENERAL SAFETY – ASPECTS

All Lievers equipment have been tested in accordance with the strict international safety standards. This section contains general advice and apply to several machines mentioned in this paragraph.

- Ensure that you are qualified (familiar with the contents of this manual), to operate and carry out light maintenance-work to the machine when you are operating the machine for the first time.
- Wear safety shoes with extra protection (steel caps and anti-slip soles)
- Wear a safety helmet, safety glasses, working gloves with anti vibraton (GELFOM) damping which do not conduct electricity and protective clothing.
- Ensure, that all symbols on the machine, can always be clearly read.
- Do not leave any tools or parts lying around on the work floor, as this can cause accidents.
- Watch where you are going, the ground can be slippery.
- Take care that you do not injure yourself on objects, such as scaffolding and reinforcement materials, which can be found directly or indirectly in the working area.
- Be careful when lifting and carrying the Pokervibrator. Do not bend forwards when picking up the apparatus, but bend your knees. Ensure that the working area is within your reach, sothat you do not have to bend forward.
- When cleaning the machine, ensure that no water or cleaning detergents get into the motor-housing.
- When the machine is not being used for longer periods of time, then it must be stored in a dry and clean area.
- Do not only pay attention to your own safety, but also to that of your colleagues.

**Regular maintenance of the machine promotes safe operation.**

## **The following safety aspects apply specifically to the PTL pneumatic poker vibrators:**

- Before connecting the poker to the main airsupply clean the airhose in order to remove liquid and dust from the inside of the airhose.
- Make sure that the operationhose and couplings are not damaged..
- See to it that the filter in the connector is clean..
- Never disamble the poker or rubber operating hose while they are still under pressure. First disconnect the airsupply from the compressor. Then wait until the pokervibrator stops operating.
- Make sure that the supplied airpressure meets the advised airpressure for the pneumatic poker you are going to use. Check whether the airsupply of the compressor meets with the airconsumption of the pneumatic poker vibrator (s)


## Warning:

With this machine the admissible assessment soundlevel of 90 dBa may be exceeded. We advice the operator to wear good EAR PROTECTORS.

## Warning:

This machine is vibrating, we advice the operator to wear good WORKING GLOVES WITH ANTI-VIBRATION PROTECTION. ( GELFOM )

## Explanation of the used safety symbols

<ol style="list-style-type: none"><li>1 Watch out</li><li>2 Goggles, safetyhelmet and ear protectors obliget</li><li>3 Working-gloves and clothing obliget</li><li>4 Savety shoes with extra protection obliget</li><li>5 Before working with the machine reed the instructionmanual carefully</li></ol> <p><b>When this safetyaspects are not clear for you, please contact:</b> <b>Lievers Holland B.V.</b> <b>Tel.: +31 (0) 297 23 1900</b> <b>Fax.:+31 (0) 297 23 1909</b></p>	<p style="text-align: center;"><b>Safety symbols</b></p> <div style="text-align: center;"><p>The image shows a collection of safety symbols. At the top left is the 'LIEVERS HOLLAND' logo. To its right is a warning triangle with an exclamation mark, labeled '1'. Below the logo are three circular icons: a pair of gloves labeled '3', an open book labeled '1', and a pair of goggles labeled '2'. Below these is a circular icon of a safety shoe labeled '4', and a large CE mark. At the bottom is a telephone icon followed by the number '+31 (0) 297 - 23 19 00'.</p></div>
--	---

## INTRODUCTION

This manual has been written to help you operate and service the Pokervibrator safely.

This manual is intended for dealers and operators of the Lievers PTL Pokervibrator.

### WHAT IS A POKERVIBRATOR ?

A Pokervibrator is an apparatus with a vibrating poker, which compacts fresh concrete. The concrete pokervibrator type PTL consists of a pneumatic motor, built in a tempered steel housing with 2 mtr. of rubber operation hose, (in- and outlet hose) and aircock with a quick action coupling  $\frac{3}{4}$ ".

### OPERATION

The PTL poker is connected, by means of a coupling, to a compressor which supplies an airpressure of **6 Atm**. By opening the aircock the airmotor is switch on and drives an excentriccal weight along the inside of the steel motorhousing. The evoked vibrations will compact the freshly poured concrete.

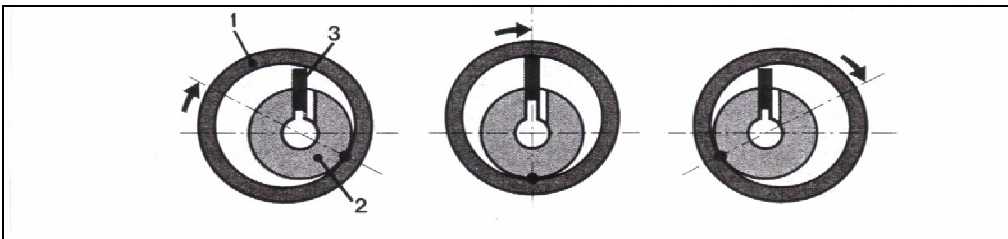
## Technical Data

Poker diam mm	Vibrations per min.	Amplitude mm	Air consumption l/min	Weight Kg	Soundlevel dBA *	Acceleration value ** m/s <sup>2</sup>	Hose length m
26	21.000	0,5	400	0.7	85	0,19	2
36	19.000	0.6	500	1.5	89	1,02	2
47	18.000	0.6	700	2.8	96	2,39	2
56	18.000	0.8	1000	4.5	95	2,87	2
67	17.500	0.9	1000	7.9	94	1,28	2
77	16.000	1.2	1300	8.9	98	4,90	2
87	15.900	1.8	1600	9.7	94	1,95	1.5
108	15.000	1.9	1900	17.7	96	2,91	1.5
155	12.000	2.6	2700	28.0	92	12,29	0.8

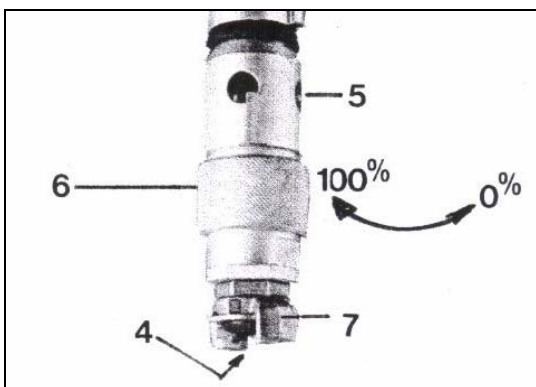
\* = The required sound specifications per appendix 1, paragraph 1.7.4. of the EC machine regulations measured at 1 mtr. distance according ISO 3744 sound level and EN ISO 11204 sound pressure level.

\*\* = The weighted effective value of acceleration, determined according EN ISO 5349, measured in open air with the machine running at nominal rpm.

## Vibrating system of the PTL pneumatic poker vibrator



1) Rotor, 2) Housing, 3) Lamel,



4) Air hose coupling 3/4", 5) Air discharge holes, 6) Air cock on/off

## Operation instructions

**CAUTION!:** Make sure that the airpressure supply is compatible to the Lievers PTL poker vibrator. ( Working Pressure: 6 Atm.)

- The Lievers PTL pokervibrator is supplied without oil. With the first startup pour 3 cc. Non detergent oil of viscosity of 20 to 30 SAE, or sachet special oil into the quick release coupling on the handle.
- During startup it is recommended to tap the pokerhead lightly in order to start the turbine.

**TIP:** before connecting the Lievers PTL poker please clean the airpressure hose from dirt and water. After the pokervibrator has been connected to the airpressure you can start the poker by turning the aircock on the handle.

## Maintenance

- After every working day or after 4 hours of contineous duty you need to add approx. 120 cc. oil in the handle. Use the special oil as mentioned above.
- For lubrication never use hydrocarbons or diesel and gasoline fuel.
- Please see to it that the filter in the quick action coupling stays clean.
- To store the poker hang the machine vertically with the handle down in order to let water drip out of the system.

**TIP:** When ordering spares please submit the following data:

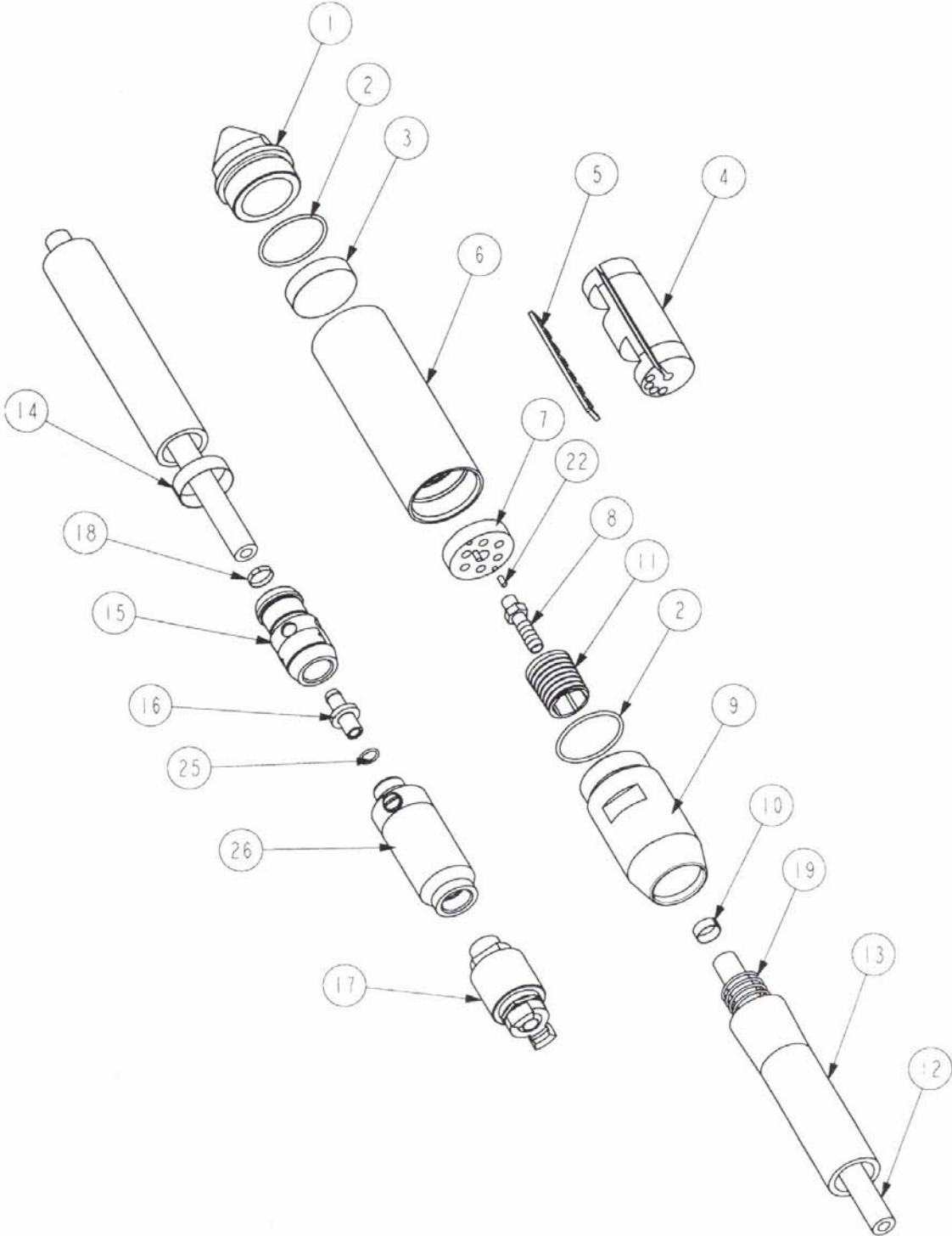
- Type of the machine
- Year of production
- Ordernumber and discription of the part
- The wanted quantity
- Address source and way of transportation

All service and operation manuals you will find on our website [www.lieversholland.nl](http://www.lieversholland.nl)

**TIP:** When you have questions please contact the supplier:

**Lievers BV Holland / Service department**  
**Tel** : + 31 297 231900  
**Telefax** : + 31 297 231909

SPARE PARTS DRAWING PNEUMATIC POKERS TYPE PTL 26 --- 108



# SPARE PARTS PNEUMATIC POKERS LIEVERS TYPE PTL

Pos.	PTL 26		PTL 36		PTL 47		PTL 56		PTL 67		DESCRIPTION
	Ref.	number	Ref.	number	Ref.	number	Ref.	number	Ref.	number	
1	182609	1	182619	1	183806	1	182905	1	182641	1	STEEL NOSE
1	183565	o	183568	o	105600	o	183571	o	183579	o	RUBBER NOSE
2	160305	2	160311	2	160015	2	160014	2	160217	2	O – RING *
3	-	-	-	-	182629	1	182635	1	182643	1	FRONT FLANGE
4	368074	1	368071	1	368067	1	368065	1	368061	1	ROTOR
5	182613	1	182623	1	182631	1	182637	1	182645	1	LAMEL *
6	368075	1	368072	1	368068	1	368066	1	368062	1	HOUSING
7	182615	1	182625	1	182633	1	182639	1	184110	1	REAR FLANGE
8	-	-	182626	1	182626	1	105521	1	105521	1	NIPLE
9	182617	1	182627	1	107701	1	185277	1	182649	1	HOSE HOLDER
10	183723	1	183723	1	183723	1	183723	1	183723	1	HOSE CLAMP *
11	101778	1	102623	1	101730	1	101582	1	101582	1	SLEEVE
12	101785	2,1m	100788	2,1m	100788	2,1m	101583	2,1m	101583	2,1m	INNER HOSE
13	101784	2m	102021	2m	105567	2m	102781	2m	102781	2m	OUTER HOSE
14	185455	1	185456	1	185457	1	185457	1	185457	1	HOSE CLAMP *
15	368076	1	368073	1	368069	1	368063	1	368063	1	HANDLE NIPLE
16	368077	1	368070	1	368070	1	368064	1	368064	1	NIPLE
17	183920	1	183920	1	183920	1	183920	1	183920	1	AIRCOCK
18	183723	1	183723	1	183723	1	183723	1	183723	1	HOSE CLAMP *
19	-	-	-	-	-	-	-	-	-	1	SPRING
25	892635	1	892635	1	892635	1	892635	1	892635	1	O – RING *

O = On request, extra to order

\* = Included in service kit

**Service kits are available for all Lievers PTL poker vibrators. This service kits consist of most wearparts who can be changed simply.**

**Service kits for PTL pokers:**

**PTL 26           nr. 187916**

**PTL 36           nr. 187917**

**PTL 47           nr. 187918**

**PTL 56           nr. 187919**

**PTL 67           nr. 187920**

**When ordering spare parts, please mention machinenummer and diameter of your PTL poker.**

# SPARE PARTS PNEUMATIC POKERS LIEVERS TYPE PTL

pos	PTL 77		PTL 87		PTL 108		DESCRIPTION
	Ref.	number	Ref.	number	Ref.	number	
1	183031	1	182714	1	182663	1	STEEL NOSE
1	183582	o	183585	o	-	-	RUBBER NOSE
2	924834	2	160334	2	183499	2	O – RING *
3	182650	1	182657	1	182664	1	FRONT FLANGE
4	368047	1	182658	1	182665	1	ROTOR
5	182653	1	182659	1	182666	1	LAMEL *
6	368048	1	182660	1	182667	1	HOUSING
7	182655	1	182661	1	182668	1	REAR FLANGE
8	107690	1	107690	1	182669	1	NIPLE
9	182907	1	182715	1	182670	1	HOSE HOLDER
10	185455	1	185455	1	185455	1	HOSE CLAMP *
11	101604	1	101604	1	101604	1	SLEEVE
12	100540	2,1m	100540	1,6m	100540	1,6m	INNER HOSE
13	100541	2m	100541	1,5m	181933	1,5m	OUTER HOSE
14	185458	1	185458	1	105905	1	HOSE CLAMP *
15	368049	1	368049	1	368049	1	HANDLE NIPLE
16	368059	1	368059	1	368059	1	NIPLE
17	183920	1	183920	1	183920	1	AIRCOCK
18	183723	1	183723	1	183723	1	HOSE CLAMP *
19	101479	1	101479	1	101479	1	SPRING
25	892635	1	892635	1	892635	1	O – RING *

O = On request, extra to order

\* = Included in service kit

**Service kits are available for all Lievers PTL poker vibrators. This service kits consist of most wearparts who can be changed simply.**

**Service kits for PTL pokers:**

**PTL 77           nr. 187921**

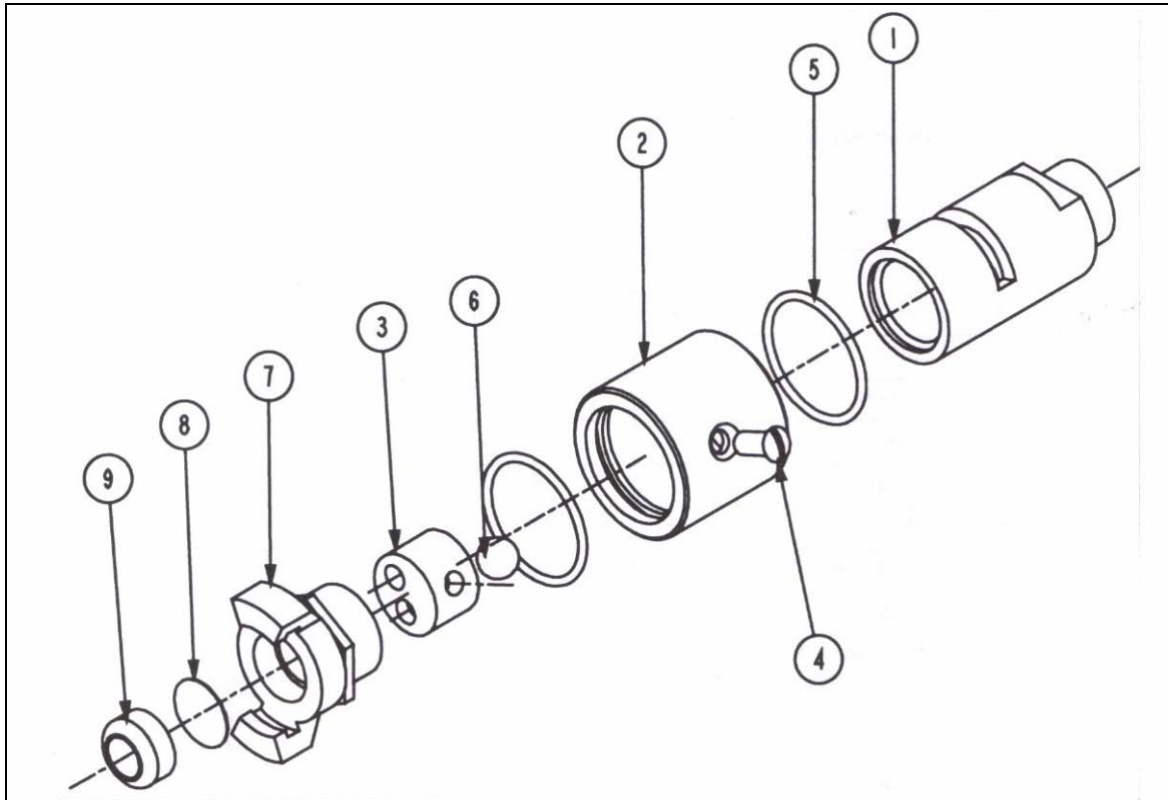
**PTL 87           nr. 187922**

**PTL 108        nr. 187923**

**When ordering spare parts, please mention machinenummer and diameter of your PTL poker.**



## SPARE PARTS FOR AIRCOCK AND COUPLING PN. 183920



Pos.	Description	Aircock compl. nr. 183920	Number
1	Aircock body	183921	1
2	Aircock ring	183922	1
3	Bushing	183923	1
4	Screw *	183924	1
5	O - ring *	183934	2
6	Ball	183925	1
7	3/4" claw coupling	102444	1
8	Filter*	100156	1
9	Rubber seal *	100192	1

\* = Included in service kit.

# GUARANTEE

## Guarantee provision

All damages to parts of the PTL Poker-Vibrator which occur within 12 months from the date of purchase and who are recognized as possessing manufacturing defects, will be replaced by the manufacturer/supplier as soon as possible.

The manufacturer/supplier declines all responsibility for damages caused by misuse, incorrect connections, improper installation and maintenance and alterations that have been carried out to the PTL Poker-Vibrator. Also the transportcosts for sending a PTL poker to the manufacturer/supplier for guarantee judgement, are not applicable.

Guarantee is also not applicable either if:

- The ventilation slots are not cleaned regularly,
- Unqualified personnel (not familiar with the contents of this operation manual) have assembled or dismantled the Poker-Vibrator.
- Original Lievers PTL parts have not been assembled,
- The Poker-Vibrator has been stored in a damp environment.
- The Poker-Vibrator has been cleaned with a high pressure cleaner or by water jet under high pressure.
- The aircsupply was not provide with a pressure reducer ( max. 6 Atm.), waterseperator and oiler system.

The guarantee is valid for 12 months from the date of purchase.

## Guarantee-certificate

Type and serialnumber Lievers PTL pneumatic poker vibrator:.....

Purchase date :.....

Manufacturer/supplier:

Bouwmachinefabriek Lievers B.V.  
Groot Mijdrechtstraat 68,  
3641 RW Mijdrecht.  
The Netherlands.

Signature:



Mr. J.F.Lievers

# EC-Declaration

## EC-Declaration of agreement for machinery

(Directive 98/37/EC, Annexe 11, under A)

Manufacturer/Supplier

Bouwmachinefabriek Lievers B.V. Holland,  
Groot Mijdrechtstraat 68,  
3641 RW Mijdrecht. The Netherlands.

Hereby declares that:

**The Poker-Vibrators type PTL:**

**complies with the regulations for the Machine Directive (No. 98/37/EC)**

Done: 1 January 2006

Mijdrecht, The Netherlands.



Name: Mr. J.F.Lievers  
Function : Director.