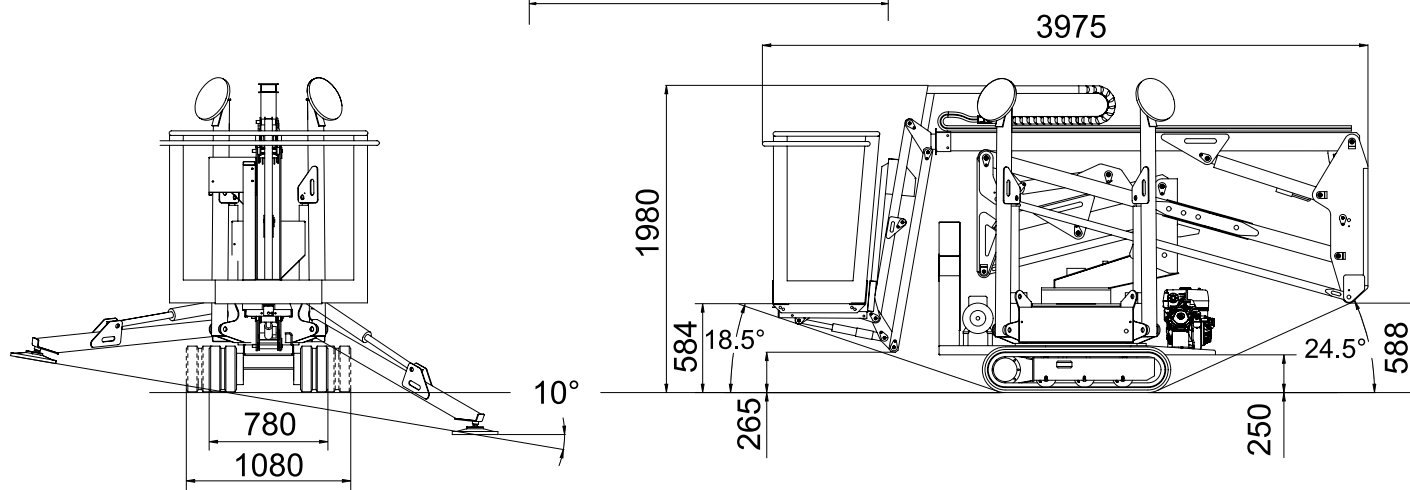
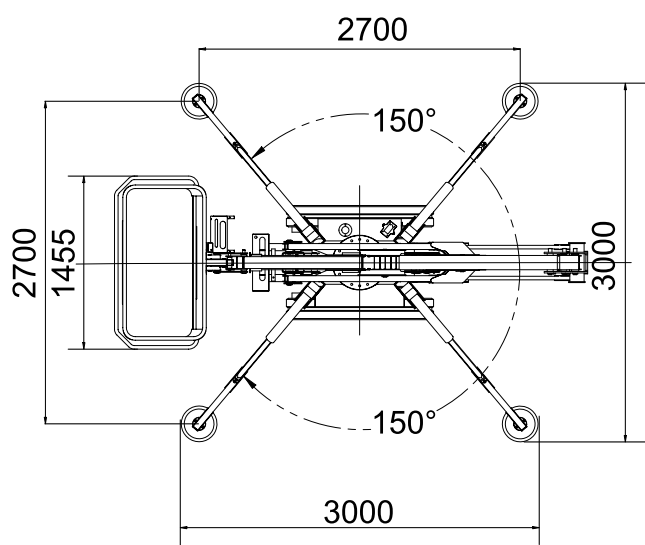
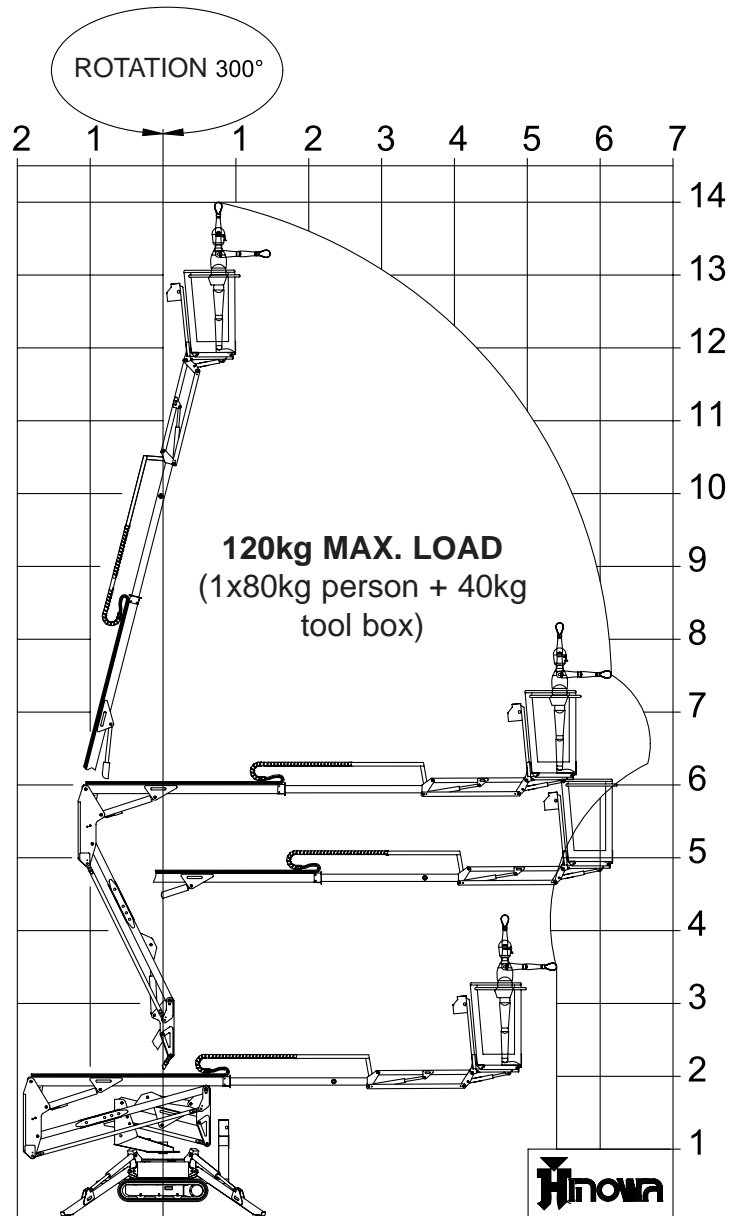
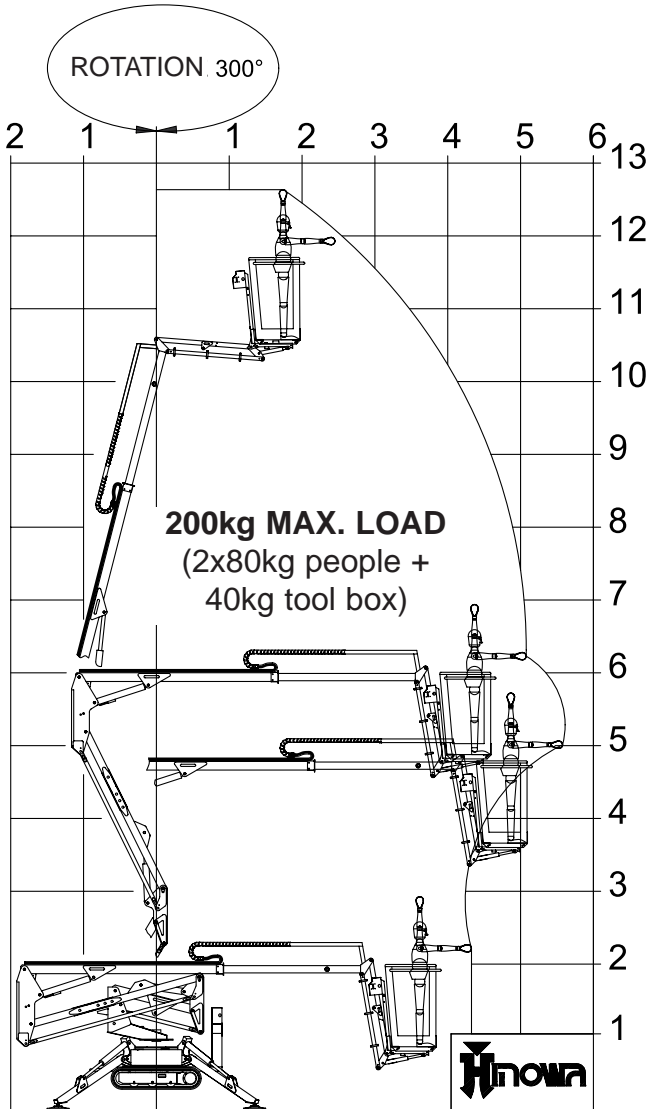


AERIAL PLATFORM GOLD LIFT 14.70



**AERIAL PLATFORM
GOLD LIFT 14.70**



AERIAL PLATFORM GOLD LIFT 14.70

PETROL ENGINE

BrandHONDA
Type.....GX390
Pistons and displacement.....Single-cylinder 389 cc
Max gross power @ rev/min.13 HP - 9,6 Kw @ 3600 rpm
Max gross power.....3000 rpm
Electrical start12 volt

DIESEL ENGINE

Brand.....HATZ
Type1B30
Pistons and displacement.....Single-cylinder 347 cc
Max gross power @ rev/min.....6,8 HP - 5,0 Kw @ 3600 rpm
Max gross power.....3000 rpm
Electrical start12 volt

ELECTRIC MOTOR

Standard220V / 50Hz - 1,5 Kw 1500 rpm
Optional110V / 50Hz - 1,5 Kw 1500 rpm

HYDRAULIC PUMPS

Type and numbergear pumps n° 2 x 3,15 cm³
Translation system pressure /outrigger175 bar
Aerial part system pressure180 bar

TRACKS

Track tensionerGrease track tensioner
BrandBridgestone
Dimensionsmm 180 x 72 x 37
Rollers per side.....3 + slide
Widening system of the undercarriage780 / 1080
Translation speed1,4 km/h
Double translation speed (optional)1,4 / 2,8 km/h

OPERATING WEIGHTKg 1700

PETROL FUEL TANKliters 6,5

DIESEL FUEL TANKliters 5,5

MAX UPPER SLANT IN RUNNING CONDITIONS25°(53%)

MAX WIND SPEED125,5 m/s