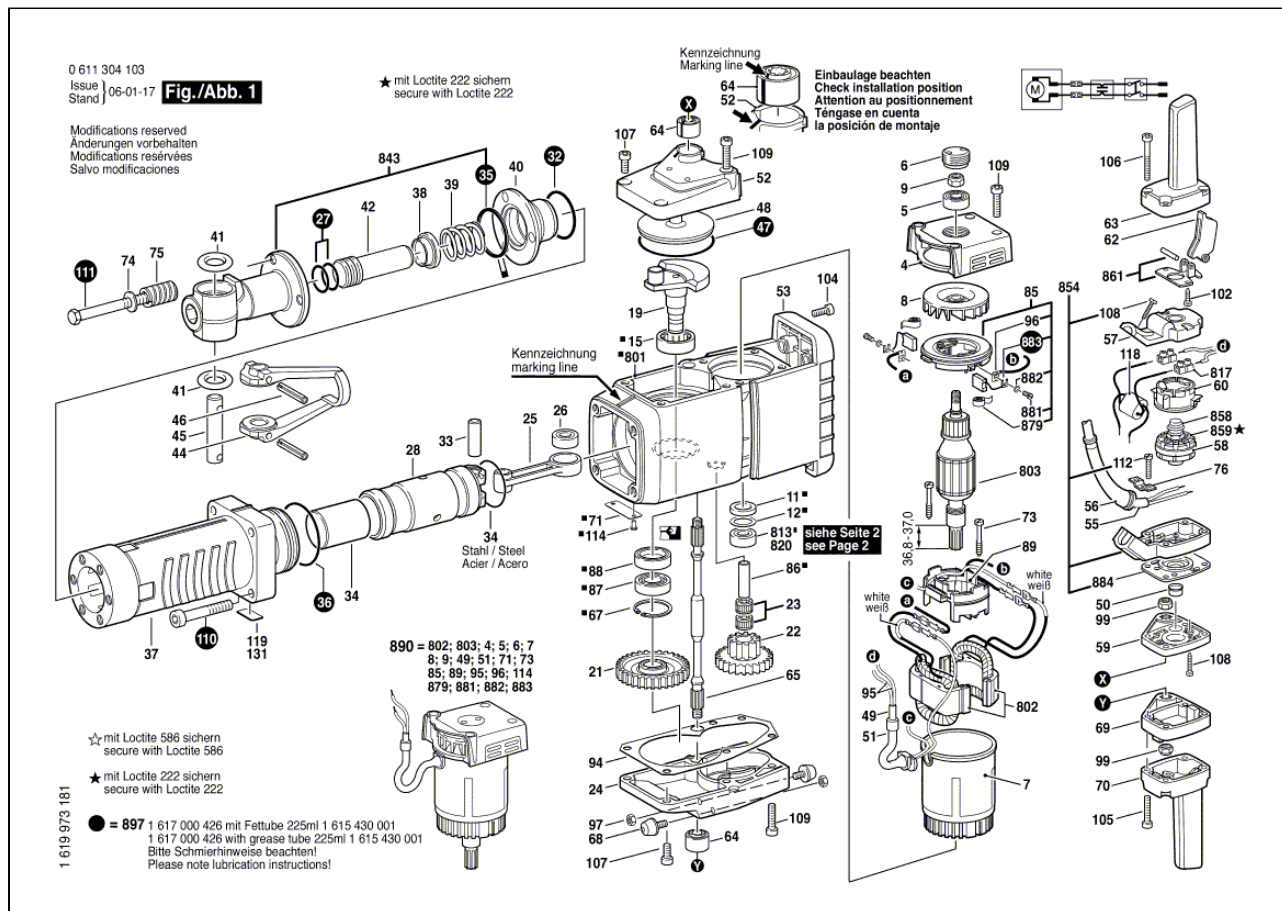


# DEMOLITION HAMMER 0 611 304 141 GSH 27



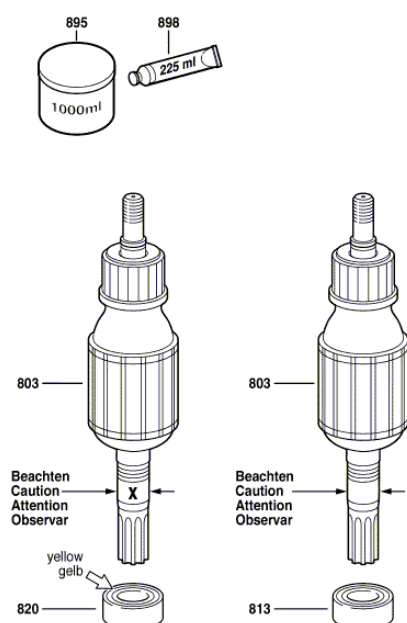
Item	Quantity	Order No.	Designation	Price group	Page
4	1	1 615 805 068	BEARING END PLATE	42	1
5	1	1 610 900 015	DEEP-GROOVE BALL BEARING / Ø12xØ37x12	31	1
6	1	1 615 500 214	SCREW PLUG	30	1
7	1	1 615 108 104	INSULATING HOUSING	33	1
8	1	1 616 610 091	FAN	27	1
9	1	1 613 313 000	HEXAGON NUT / DIN 985-M12X1	14	1
11	1	1 610 108 013	FELT WASHER	12	1
12	1	1 610 102 616	SUPPORTING DISC / Ø37x30x1,0 MM	14	1
15	1	1 610 910 091	NEEDLE-ROLLER BEARING / D35xD47x17	34	1
19	1	1 616 110 033	ECCENTRIC SHAFT	49	1
21	1	1 616 318 009	CYLINDRICAL GEAR / Z=45	48	1
22	1	1 616 328 036	CYLINDRICAL GEAR / Z=19/52	51	1
23	2	1 610 913 005	NEEDLE-ROLLER ASSEMBLY	20	1
24	1	1 615 500 323	GEAR COVER	48	1
25	1	1 612 001 040	CONNECTING ROD	44	1
26	2	1 610 910 092	NEEDLE-ROLLER BEARING / D25xD37x17	33	1
27	2	1 610 210 033	O-RING	12	1
28	1	1 618 700 043	HAMMER PISTON	54	1
30	1	1 614 601 039	SNAP RING / Ø54,2xØ2,8	11	0
32	1	1 900 210 156	O-RING / 60x4 MM	21	1
33	1	3 613 101 500	PISTON PIN	19	1
34	1	1 618 710 039	STRIKER	41	1
35	1	1 610 209 007	SEAL RING	21	1
36	1	1 900 210 166	O-RING / 80x3 MM	17	1
37	1	1 615 806 029	GUIDE TUBE	55	1
38	1	1 610 220 009	GUIDE BUSHING	30	1

39	1	1 614 619 005	COMPRESSION SPRING	19	1
40	1	1 615 700 017	INTERMEDIATE FLANGE	48	1
41	2	1 610 210 008	O-RING / 17,3x17,7 MM	18	1
42	1	1 613 123 003	STRIKER PIN	47	1
44	1	1 618 045 018	RETAINING BRACKET	52	1
45	1	1 613 103 004	LOCKING BOLT	40	1
46	2	2 917 760 187	CLAMPING SLEEVE / 8x55 DIN 1481	12	1
47	1	1 900 210 172	O-RING / 100x3 MM	22	1
48	1	1 610 516 007	SEALING COVER	27	1
49	1	1 610 707 000	INSULATION TUBING	11	1
50	1	3 600 421 500	PROTECTION SLEEVE	13	1
51	1	1 610 703 019	GROMMET	17	1
52	1	1 615 500 324	FAN COVER	41	1
53	1	1 615 500 313	COVERING HOOD	44	1
55	1	2 610 992 442	MAINS CONNECTION CABLE		1
56	1	1 610 703 011	GROMMET	26	1
57	1	1 615 500 212	SWITCH COVER	22	1
58	1	1 617 200 015	ON-OFF SWITCH	40	1
59	1	1 615 700 041	INTERMEDIATE PLATE	46	1
60	1	1 615 500 330	INSULATING CAP	16	1
62	1	1 612 026 011	SWITCH-PAWL	19	1
63	1	1 615 132 010	HANDLE	35	1
64	2	1 616 334 000	RUBBER TORSION-BAR	31	1
65	1	1 613 060 005	TOOTHED SHAFT	39	1
67	1	2 916 660 023	C-CLIP / DIN 472 52x2MM	16	1
68	2	1 613 465 001	RUBBER BUFFER	18	1
69	1	1 615 700 042	INTERMEDIATE PLATE	47	1
70	1	1 615 132 011	HANDLE	35	1
71	1	1 611 11A 003	NAMEPLATE	15	1
73	2	1 603 435 019	SELF-TAPPING SCREW / BZ 4,8x78 MM	11	1
74	3	2 916 160 009	DISC SPRING / DIN 2093-A25X12,2X1,5	15	1
75	3	3 614 640 501	COMPRESSION SPRING	21	1
76	1	3 611 034 500	FASTENING PLATE	16	1
85	1	1 614 336 045	BRUSH HOLDER	34	1
86	1	1 610 300 033	AXLE PIN	29	1
87	1	1 610 900 027	DEEP-GROOVE BALL BEARING / Ø25xØ52x15	32	1
88	1	1 610 283 016	SHAFT SEALING RING	22	1
89	1	1 610 009 008	INSULATING PLATE	14	1
94	1	1 611 015 021	SEALING PLATE	12	1
95	1	1 614 431 030	CONNECTING CABLE	19	1
96	2	1 614 448 037	CONNECTING CABLE	20	1
97	2	2 915 011 007	HEXAGON NUT / DIN 934-M6-8-A	10	1
99	2	3 613 313 500	HEXAGON NUT / DIN 985-10-M10x1	14	1
102	2	2 910 211 025	SELF-TAPPING SCREW / DIN 7971-BZ4,2x13	10	1
104	4	2 910 141 201	HEX-SOCKET-HEAD CAP SCREW / DIN 912-M6x20-8.8	14	1
105	4	2 914 551 188	MICROENCAPSULATED SCREW / DIN 912-M6X30-8.8	11	1
106	4	2 914 551 189	MICROENCAPSULATED SCREW / DIN 912-M6X55-8.8	11	1
107	4	2 910 141 242	HEX-SOCKET-HEAD CAP SCREW / DIN 912-M8x20-8.8	12	1
108	4	2 603 490 023	TORX OVAL-HEAD SCREW	10	1
109	9	2 910 141 248	HEX-SOCKET-HEAD CAP SCREW / DIN 912-M8x35-8.8	12	1
110	4	2 910 141 356	HEX-SOCKET-HEAD CAP SCREW / DIN-M12x70-8.8	14	1
111	3	2 914 550 034	MICROENCAPSULATED SCREW / DIN EN-24014-M12x110-12.9	15	1
112	2	2 910 211 236	SELF-TAPPING SCREW / DIN 7971-ST4,8x25-C	10	1
114	2	2 917 721 034	ROUND-HEAD GROOVED PIN / 2x6 DIN 1476-ST	10	1
118	1	1 617 328 030	SUPPRESSION KIT	38	1
135	1	3 611 119 512	REFERENCE PLATE / CAUTION	15	0
800	1	1 617 000 852	MODIFICATION SET / 110-240V	65	2
801	1	1 617 000 851	MOTOR HOUSING	64	1
802	1	1 614 220 168	FIELD / 110V		1
803	1	1 614 011 100	ARMATURE / 110V	58	1
813	1	1 610 910 035	NEEDLE-ROLLER BEARING / D20xD37x17	31	1

843	1	1 617 000 428	TOOLHOLDER	59	1
854	1	1 617 000 858	SWITCH HOUSING	35	1
858	1	1 610 591 001	PROTECTIVE CAP	21	1
859	6	2 910 091 118	SLOTTED PAN-HEAD SCREW / DIN 85-AM4x8-4.8	10	1
861	1	1 617 000 429	FASTENING PLATE	24	1
879	2	1 614 652 001	SPIRAL SPRING	15	1
881	2	1 613 490 005	TORX OVAL-HEAD SCREW	13	1
882	2	2 916 699 130	SPRING LOCK WASHER	10	1
883	1	1 617 000 425	CARBON-BRUSH SET	32	1
884	1	1 611 099 003	INSULATING PLATE	15	1
890	1	1 617 000 857	UN. FLANGE-MTD. MOTOR / 100-110V	61	1
895	1	1 615 430 007	BOX / 1000 ML, FT1 V27	42	2
897	1	1 617 000 426	SERVICE PACK	41	1
898	1	1 615 430 001	GREASE TUBE / 225 ML, FT1 V27	30	2

0 611 304 103  
Issue  
Stand 05-09-09

**Fig./Abb. 2**



**Typ 0 611 304 0 ..**

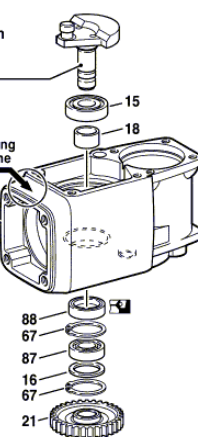
Altes Motorgehäuse, mit alter Exzenterwelle.  
Old motor housing with old eccentric shaft.

Alte Ausführung  
Old execution  
Ancien exécution  
Vieja ejecución

Pos. 19  
1 616 110 027  
bleibt lieferbar  
still available

ohne Kennzeichnung  
without marking line

Pos. 1  
1 615 106 031  
nicht mehr lieferbar  
not longer available



**Typ 0 611 304 1 ..**

Neues Motorgehäuse, mit neuer Exzenterwelle.  
New motor housing with new eccentric shaft.

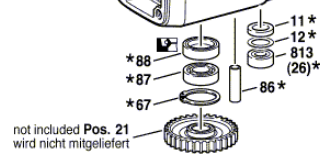
Umbausatz = Pos. 800  
Modification Set = pos. 800 } 1 617 000 852

Neue Ausführung  
New execution  
Nouvelle exécution  
Nueva ejecución

Pos. 19  
1 616 110 033  
liegt lose bei  
is separately included

Kennzeichnung  
marking line

Pos. 801\*  
1 617 000 851

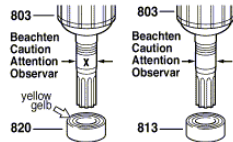


\* montiert in Pos. 801 = 1 617 000 851  
assembled in pos. 801 = 1 617 000 851

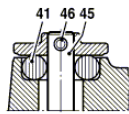
Modifications reserved  
Änderungen vorbehalten  
Modifications réservées  
Salvo modificaciones

0 611 304 103  
Issue  
Stand 06-01-17

**Fig./Abb. S**

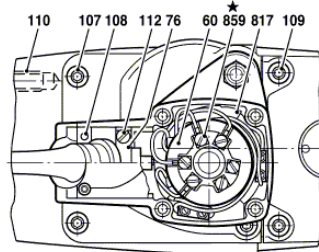


Pos. 37 und 111 entfetten; Pos. 111 mit Loctite 586 sichern  
degrease pos. 37 and 111; Pos. 111 secure with Loctite 586  
pièces 37 et 111 dégraisser; Pos. 111 protéger avec Loctite 586  
posiciones 37 y 111 desengrasar; Pos. 111 colarse con Loctite 586



Anzugsmomente  
Torque values  
Couple de serrage  
Pares de apriete

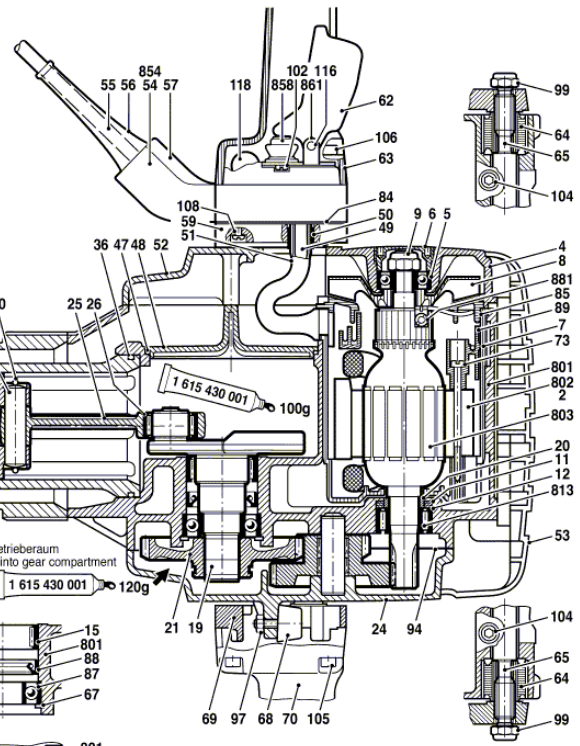
Pos.	6	9	73	97	99	102	104	105	106	107	108	109	110	111	112	117	859	881
	6	22.0	3.0	7.2	26.0	0.8	8.0	8.0	8.0	20.0	0.6	20.0	60.0	70.0	3.2	0.5	0.5	1.6
		26.0	4.0	9.7	35.0	1.2	11.0	11.0	11.0	26.0	0.8	26.0	80.0	90.0	4.0	0.7	0.8	2.3



Teile fetten - Rest in Getrieberaum  
Grease the parts - rest into gear compartment

27-29 mm

29.7-30.0 mm



☆ mit Loctite 586 sichern  
secure with Loctite 586  
★ mit Loctite 222 sichern  
secure with Loctite 222

Maße in mm  
Dimensions in mm  
Cotes en mm  
Medidas en mm

Änderungen vorbehalten  
Modifications réservées  
Salvo modificaciones